

# Sensory Story

On your day at SWELL Sculpture Festival you may experience...



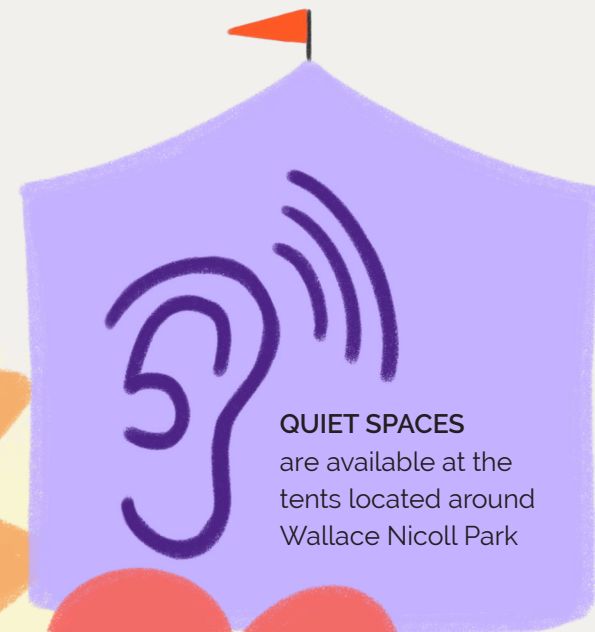
## **You might see:**

- Bright and colourful artworks
- Moving art
- Lights (during evening)
- Crowds of people, prams, bikes etc.
- Dogs on a leash
- Traffic
- Aeroplanes overhead

Depending on the weather you might experience...

Hot sun, wind and rain.

We have shelters located around the festival site.



## **QUIET SPACES**

are available at the tents located around Wallace Nicoll Park

## **Touch/feel:**

- Sand underfoot
- Wind
- Sun
- Hot footpath
- Rain
- Grass
- Tactile sculptures



## **Sound:**

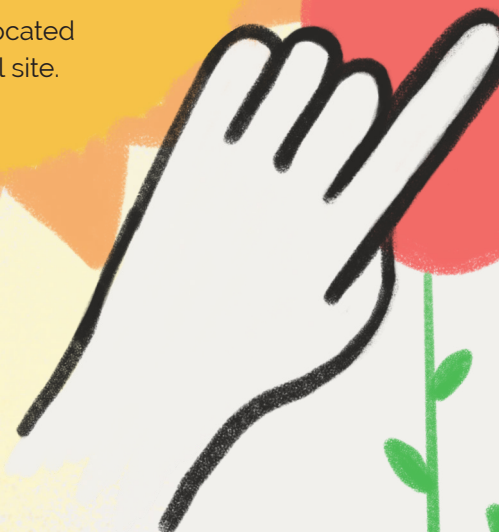
- People talking
- Waves
- Traffic
- Aeroplanes overhead
- Wind
- Pets
- Amplified music near bar and sculptures

## **Smell:**

- Ocean/beach
- Food cooking

## **Taste:**

- Salty air



SWELL Sculpture Festival is an outdoor experience that can stimulate many of your senses...please come and enjoy the festival as you feel comfortable to do so. Our staff and volunteers are here to help!